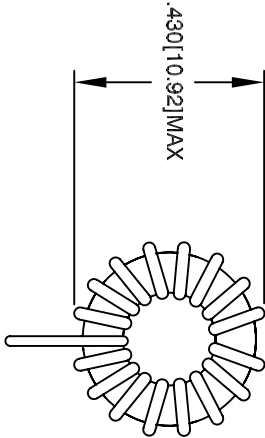


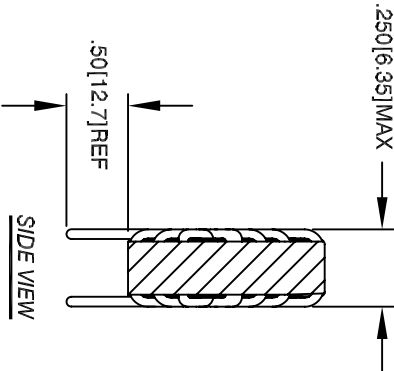
The information contained in this drawing is the sole property of CWS Coil Winding Specialist. Any reproduction in part or whole without written permission of CWS Coil Winding Specialist is prohibited.

| REVISION HISTORY |     |   |             |         |     |
|------------------|-----|---|-------------|---------|-----|
| REV              | ECN | DESCRIPTION                               | SIGN & DATE |         |     |
|                  |     |   | BY          | DATE    | CHK |
| A                |     | INITIAL DESIGN                            | RPR         | 8/08/04 | JL  |
| B                |     | REVERSE DIMENSION AND ADD ROHS COMPLIANCE | KLC         | 5/11/09 | AM  |

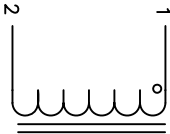
(VERTICAL MOUNT)  
PN: TC-560M-0.5A-37V



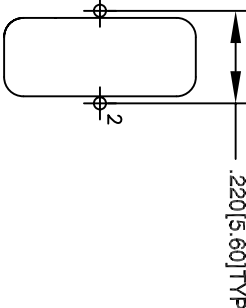
FRONT VIEW



SIDE VIEW



SCHEMATIC



MOUNTING HOLES PATTERN

7

BUILD TO ROHS COMPLIANCE

6

LABEL IDENTIFYING PART ON BULK PACKAGING  
MARK PART NUMBER, REVISION, DATE CODE ON

5

TO THE CORE  
MUST REST FLAT ON PCB. LEADS MUST BE TANGENT  
FLUSH WITH THE COIL EDGE, AS SHOWN (I.E. COIL  
REMOVE INSULATION AND TIN LEADS. 0.50 INCH

4

WIND COILS EVENLY SPACED AROUND THE CORE  
CONSTRUCTION:

3

HI-POT TEST FOR WINDING TO CORE ISOLATION = 500 VDC MIN  
CURRENT RATING : 0.50 AMPS, 40 °C TEMP. RISE, NO AIR FLOW  
DCR = 155 MILLI-OHMS MAX.  
INDUCTANCE = 56.0 uH ±20% @ LOW DC BIAS, 1 KHz, 250mV  
SPECIFICATIONS:

2

WIRE: UL RECOGNIZED 155°C RATED MAGNET WIRE  
CWS BYTEMARK OR OTHER APPROVED PART  
CORE: FERRITE/POWDERED/IRON TOROIDAL CORE

1

RATING CLASS B (130°C MIN.) REQUIRED  
MATERIAL: UL RECOGNIZED 94V-0 FOR FLAMMABILITY

NOTES: TOROIDAL POWER CHOKE. ALL DIMENSIONS IN INCHES[MM]

|            |        |
|------------|--------|
| AUTOCAD    | X      |
| SOLIDWORKS |        |
| SIGN       | DATE   |
| DRWN       | 6/8/04 |
| CHKD       | 6/8/04 |
| ENGR       | 6/8/04 |
| APPR       | 6/8/04 |

COILWS.COM, INC

353 W Grove Ave  
Orange, CA 92865

CWS Coil Winding Specialist.

TITLE:

Power Toroidal Inductor  
56 uH, 0.5 Amp, Vertical

SIZE

DMC NO.

TC-560M-0.5A-37V

REV

B

SCALE

2=1

SHEET

1

OF

1

EP FORM0005 REV 3 (10/27/08)

CAD-FILE: